



## Where are we located?

The school classroom is located between wards J1 and H1 on the 1st floor of the hospital.

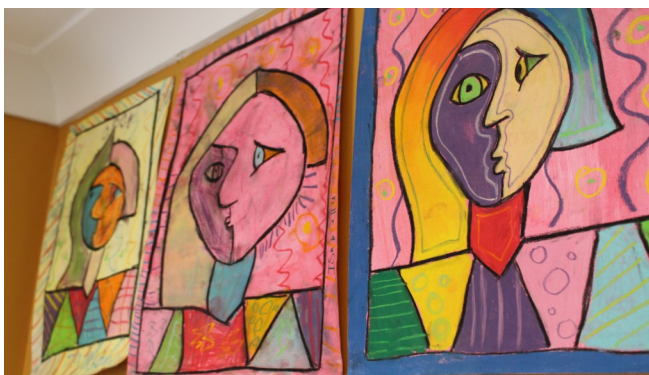
The school office is located on J2 Ward.

Address : School Office  
Ward J2  
Lookout Road  
New Lambton Heights  
NSW 2305

Phone: 02 4985 5090 (office)

Fax: 02 4921 3378

Email: [johnhunter-s.school@det.nsw.edu.au](mailto:johnhunter-s.school@det.nsw.edu.au)  
Website: [www.johnhunter-s.schools.nsw.edu.au](http://www.johnhunter-s.schools.nsw.edu.au)



## The School Day

- 8.30** Staff administration meetings and preparation of programs
- 9:00** Ward rounds for daily enrolments
- 9.30** School room opens for students able to attend classroom. Core academic skills addressed e.g. literacy, numeracy
- 11.00** Morning Tea (classroom or ward)
- 11.30** School : Problem solving & multimedia
- 12.30** Lunch break - all students return to ward
- 1.30** School : Project focus afternoons e.g. creative arts, science, technology
- 3.00** Classroom program concludes



# John Hunter Hospital School

*School, Family, Community*

Supporting students in a happy, safe and positive environment.

Principal : Sally Graham



Education



## Who can attend?

All school aged students from Kindergarten to Year 12, admitted to hospital, are able to attend the school. Students from all sectors are accepted - public , private, independent and religious schools.



## Our Staff

The Hospital School:

- ◆ has experienced and dedicated staff
- ◆ liaises with the census school to support educational outcomes
- ◆ teaches all students K-12 following DoE and Board of Studies guidelines
- ◆ comprehensively caters for School Certificate & HSC students
- ◆ works in consultation / collaboration with medical treating teams

## What we provide

We provide students with:

- ◆ positive learning experiences
- ◆ opportunities for academic achievement
- ◆ technology to support learning
- ◆ liaison service to census school

Students are supported to participate in the following areas:

- ◆ English
- ◆ Mathematics
- ◆ Creative arts
- ◆ Science
- ◆ History
- ◆ Geography
- ◆ ICT
- ◆ Special Events
- ◆ Incursions and virtual excursions
- ◆ Personal interest projects



The hospital school:

- ◆ provides a variety of educational activities
- ◆ supports students in the classroom and/or on the hospital ward
- ◆ develops individual educational programs for a differentiated curriculum
- ◆ makes reasonable adjustments supporting student physical needs
- ◆ supports the hospital community events and activities
- ◆ promotes physical and emotional well-being